

## Hytech have offered Precision Engineering Services since 2002.

With an internationally experienced team with full time designers with 20+ years experience each plus programmers with 15 years plus we can offer you a solution:

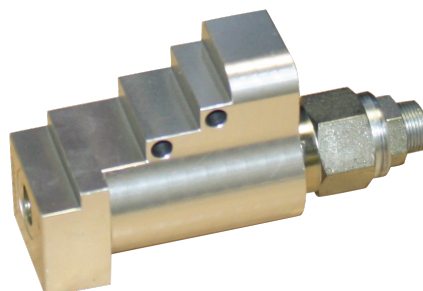
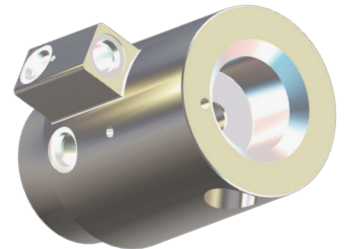
- ✓ 3D Designs using ProE and programming using MasterCam
- ✓ Parts Manufacturing
- ✓ Reverse Engineering Plus Enhanced Designs to Improve Performance
- ✓ CNC Milling
- ✓ Turning
- ✓ Heat Treatment and Anodising
- ✓ Grinding
- ✓ Research and Development
- ✓ Prototyping
- ✓ 1 to 1000s - all size of jobs

### Hytech can work with a variety of metals

- ✓ Aluminium
- ✓ Steel – all grades
- ✓ Ductile Iron
- ✓ Bronze, Phosphorous Bronze ...

### Hytech work with a variety of industries including

- ✓ Marine
- ✓ Forestry
- ✓ Automotive
- ✓ Sound Engineering
- ✓ Agriculture
- ✓ Viticulture
- ✓ Military
- ✓ Mining
- ✓ Plastics Industry



For more information on Hytech's Precision Engineering Services, speak with our Production Manager Paul Harmse on **09 921 2221** or email **Paul@hytech.co.nz**.

## HYTECH AUCKLAND

32 Crooks Road,

East Tamaki,

P.O.Box 204157,

Highbrook.

P + 64 9 921 2221

F + 64 9 274 4441

www.hytech.co.nz

hystech@hytech.co.nz